







Contents

*Whole Chicken
Breast*

Whole Leg

Whole Wing

Giblets



Whole Chicken





ŞENPİLİÇ WHOLE CHICKEN

PRODUCT CODE	PACKING TYPE	NAME OF CATALOG	SIZE e	SHELF LIFE PRODUCT
4128	BOX WITH LID	WHOLE CHICKEN	900 gr	12 MONTHS
14394	BOX WITH LID	WHOLE CHICKEN	1000 gr	
14397	BOX WITH LID	WHOLE CHICKEN	1100 gr	
14398	BOX WITH LID	WHOLE CHICKEN	1200 gr	
14399	BOX WITH LID	WHOLE CHICKEN	1300 gr	
14489	BOX WITH LID	WHOLE CHICKEN	1400 gr	
14490	BOX WITH LID	WHOLE CHICKEN	1500 gr	
14491	BOX WITH LID	WHOLE CHICKEN	1600 gr	
14492	BOX WITH LID	WHOLE CHICKEN	1700 gr	
14493	BOX WITH LID	WHOLE CHICKEN	1800 gr	
14494	BOX WITH LID	WHOLE CHICKEN	1900 gr	
14495	BOX WITH LID	WHOLE CHICKEN	2000 gr	
14496	BOX WITH LID	WHOLE CHICKEN	2100 gr	
14497	BOX WITH LID	WHOLE CHICKEN	2200 gr	
14488	BOX WITH LID	WHOLE CHICKEN	2300 gr	
14498	BOX WITH LID	WHOLE CHICKEN	2400 gr	



BILIKO WHOLE CHICKEN

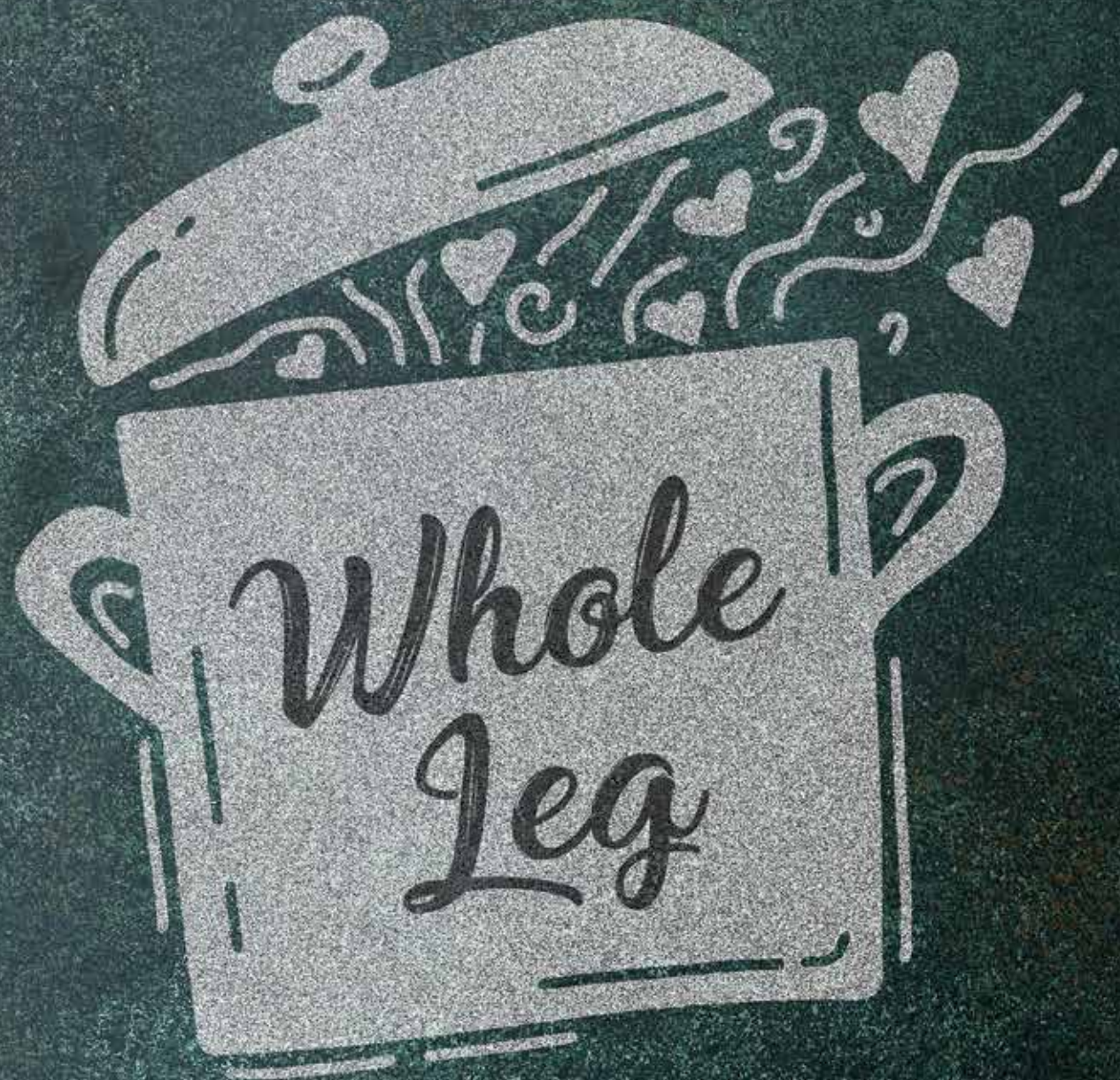
PRODUCT CODE	PACKING TYPE	NAME OF CATALOG	SIZE e	SHELF LIFE PRODUCT
4138	BOX WITH LID	WHOLE CHICKEN	900 gr	12 MONTHS
4134	BOX WITH LID	WHOLE CHICKEN	1000 gr	
4135	BOX WITH LID	WHOLE CHICKEN	1100 gr	
4136	BOX WITH LID	WHOLE CHICKEN	1200 gr	
4137	BOX WITH LID	WHOLE CHICKEN	1300 gr	
4117	BOX WITH LID	WHOLE CHICKEN	1400 gr	
4118	BOX WITH LID	WHOLE CHICKEN	1500 gr	
4119	BOX WITH LID	WHOLE CHICKEN	1600 gr	
4120	BOX WITH LID	WHOLE CHICKEN	1700 gr	
4121	BOX WITH LID	WHOLE CHICKEN	1800 gr	
4122	BOX WITH LID	WHOLE CHICKEN	1900 gr	
4123	BOX WITH LID	WHOLE CHICKEN	2000 gr	
4124	BOX WITH LID	WHOLE CHICKEN	2100 gr	
4125	BOX WITH LID	WHOLE CHICKEN	2200 gr	
4126	BOX WITH LID	WHOLE CHICKEN	2300 gr	
4127	BOX WITH LID	WHOLE CHICKEN	2400 gr	



CILLIKIZ WHOLE CHICKEN (B QUALITY)

PRODUCT CODE	PACKING TYPE	NAME OF CATALOG	SIZE e	SHELF LIFE PRODUCT
29579	BOX WITH LID	WHOLE CHICKEN (B quality)	900 gr	12 MONTHS
30582	BOX WITH LID	WHOLE CHICKEN (B quality)	900 gr	
31300	BOX WITH LID	WHOLE CHICKEN (B quality)	1000 gr	
31301	BOX WITH LID	WHOLE CHICKEN (B quality)	1100 gr	
31302	BOX WITH LID	WHOLE CHICKEN (B quality)	1200 gr	
31303	BOX WITH LID	WHOLE CHICKEN (B quality)	1300 gr	
31321	BOX WITH LID	WHOLE CHICKEN (B quality)	1400 gr	







ŞENPİLİÇ WHOLE LEG (CHICKEN LEG QUARTER)

PRODUCT CODE	PACKING TYPE	NAME OF CATALOG	SIZE e	SHELF LIFE PRODUCT
31308	BOX WITHOUT COVER (SHRINK IN BULK)	WHOLE LEG (CHICKEN LEG QUARTER)	10 kg (1 BOX)	12 MONTHS

**ŞENPİLİÇ CHICKEN DRUMSTICK**

PRODUCT CODE	PACKING TYPE	NAME OF CATALOG	SIZE e	SHELF LIFE PRODUCT
31310	BOX WITHOUT COVER (SHRINK IN BULK)	CHICKEN DRUMSTICK	10 kg (1 BOX)	12 MONTHS





Breast



ŞENPİLİÇ BREAST WITH BONE (W/O BACK)

PRODUCT CODE	PACKING TYPE	NAME OF CATALOG	SIZE e	SHELF LIFE PRODUCT
31305	BOX WITHOUT COVER (SHRINK IN BULK)	BREAST WITH BONE (W/O BACK)	10 kg (1 BOX)	12 MONTHS



ŞENPİLİÇ SKINLESS BONELESS BREAST

PRODUCT CODE	PACKING TYPE	NAME OF CATALOG	SIZE e	SHELF LIFE PRODUCT
24473	BOX WITH LID (IN BULK)	SKINLESS BONELESS BREAST	15 kg (1 BOX)	12 MONTHS
31307	BOX WITHOUT COVER (SHRINK IN BULK)	SKINLESS BONELESS BREAST	10 kg (1 BOX)	
4561	BOX WITH LID	SKINLESS BONELESS BREAST	10 kg (1 BOX)	



Whole Wing





ŞENPİLİÇ WHOLE WING (3 JOINT)

PRODUCT CODE	PACKING TYPE	NAME OF CATALOG	SIZE e	SHELF LIFE PRODUCT
31311	BOX WITHOUT COVER (SHRINK IN BULK)	WHOLE WING (3 JOINT)	10 kg (1 BOX)	12 MONTHS
28842	BOX WITH LID	WHOLE WING (3 JOINT)	10 kg (1 BOX)	







ŞENPİLİÇ LIVER IN TRAY

PRODUCT CODE	PACKING TYPE	NAME OF CATALOG	SIZE e	SHELF LIFE PRODUCT
4588	BOX WITHOUT COVER (W / SHRINK)	LIVER IN TRAY	450 gr	6 MONTHS
4587	BOX WITHOUT COVER (W / SHRINK)	LIVER IN TRAY	450 gr	3 MONTHS
32023	BOX WITHOUT COVER (W / SHRINK)	BULK	-	9 DAYS



ŞENPİLİÇ CHICKEN GIZZARD

PRODUCT CODE	PACKING TYPE	NAME OF CATALOG	SIZE e	SHELF LIFE PRODUCT
4586	BOX WITH LID	CHICKEN GIZZARD	10 kg (1 BOX)	12 MONTHS





Practical Product





ŞENPİLİÇ CHICKEN NUGGET

PRODUCT CODE	PACKING TYPE	NAME OF CATALOG	PIECE WEIGHT	SIZE e	SHELF LIFE PRODUCT
30557	BOX (8 piece)	CHICKEN NUGGET	100 gr	8 kg (1 BOX)	12 MONTHS



ŞENPİLİÇ CHICKEN SCHNITZEL

PRODUCT CODE	PACKING TYPE	NAME OF CATALOG	PIECE WEIGHT	SIZE e	SHELF LIFE PRODUCT
31318	BOX (8 piece)	CHICKEN SCHNITZEL	100 gr	8 kg (1 BOX)	12 MONTHS



ŞENPİLİÇ CORDON BLEU

PRODUCT CODE	PACKING TYPE	NAME OF CATALOG	PIECE WEIGHT	SIZE e	SHELF LIFE PRODUCT
30551	BOX (8 piece)	CORDON BLUE (CHEESE)	100 gr	8,64 kg (1 BOX)	12 MONTHS
30558	BOX (8 piece)	CORDON BLUE (CHEESE WITH SALAMI)	120 gr	8,64 kg (1 BOX)	



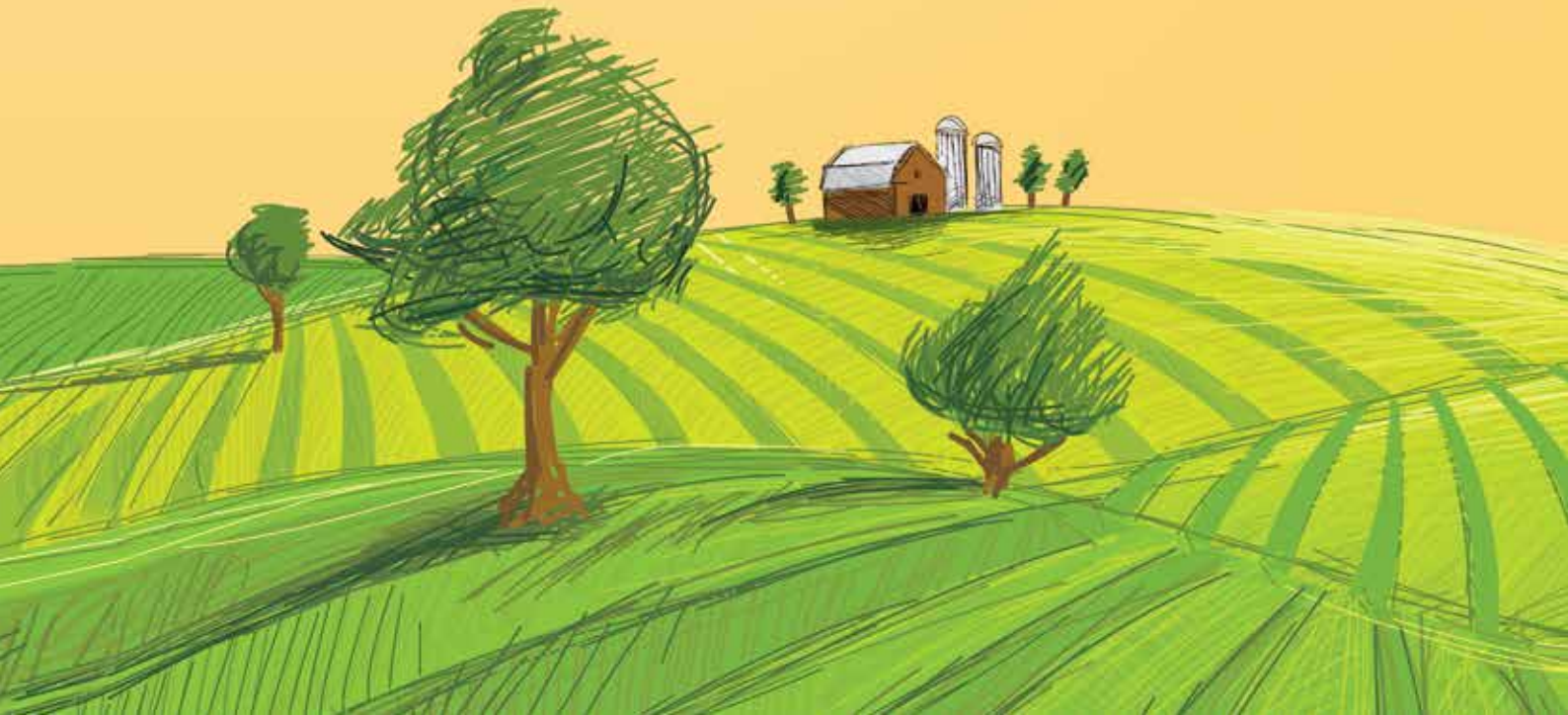
ŞENPİLİÇ FROZEN CHICKEN SAUSAGE

PRODUCT CODE	PACKING TYPE	NAME OF CATALOG	PIECE WEIGHT	SIZE e	SHELF LIFE PRODUCT
4720	BOX (24 piece)	FROZEN CHICKEN SAUSAGE	34 gr	8,160 kg (1 BOX)	6 MONTHS
30561	BOX (24 piece)	FROZEN CHICKEN SAUSAGE	34 gr	8,160 kg (1 BOX)	12 MONTHS



Şenpiliç is Turkey's biggest chicken meat producer with 18% market share and its 425.000 tons/year production quantity. As a pioneering brand in the chicken sector of Turkey, we operate with 26 breeding farms, 2 hatcheries, 3 feed plants, 3 slaughterhouses equipped with cutting-edge technologies and 1 further processing plant. Also have over 2000 contracted producers, and contributes to the Turkish economy by providing employment to 3.700 people directly and 12.000 people indirectly.

We use best quality management practices at every step in the chicken production process starting from breeding farms to distribution in order to ensure the safety and quality of our products.



“Food Safety” first...

Food safety and quality requirements are applied and registered with advanced practices. The production in slaughterhouses is under the control and supervision of Turkish Standards Institute and international Organization for Standardization which is certified with ISO 22000 Food Safety Management System Certificate, ISO 9001 Quality Management System Certificate and HACCP 13001 Certificate.

Şenpiliç, who successfully passed the audits by carrying out the ‘Good Agricultural Practices (GAP)’ activities including the regulations on food safety in agricultural production by the Ministry of Food, Agriculture and Livestock, was awarded the ‘Good Agriculture’ certificate in 2018. It continues its activities in this context within the framework of the relevant certification.





Şenpiliç Slaughterhouses, which produces under the conditions of ISO 9001 Quality Management System, ISO 22000 Food Safety Management System, ISO 45001 Occupational Health and Safety Management System and ISO 14001 Environmental Management System; Also, Sogutlu factory has right to sell EUROPEAN UNION countries with a Pre-Permit Certificate.

All of the Şenpiliç slaughterhouses have Halal Certificate and the broilers are slaughtered in accordance with Islamic methods.

We carry out daily chicken meat distribution and sales to 81 cities of Turkey with its wide sales network. Distribution is performed throughout Turkey with GPRS vehicle tracking system to 18 regional directorates and 60 dealers by Şenpiliç frigorific fleet. Also for the customers who demand ritual slaughter of meat requiring Halal Certification, is strictly supervised in Şenpiliç slaughterhouses and exports more than 30 countries all over the world which predominantly to Iraq, Libya, Africa and Middle east regions. Şenpiliç has all the documents that authorizes it to export to the EU, Russian Federation and United Arab Emirates as well.



www.senpilic.com.tr/EN
www.ciftliktensofraya.net

 / [senpilic.turkiye](https://www.facebook.com/senpilic.turkiye)  / [senpilic](https://www.instagram.com/senpilic)
 / [senpilic turkiye](https://www.youtube.com/senpilic_turkiye)  / [senpilic](https://www.linkedin.com/senpilic)